

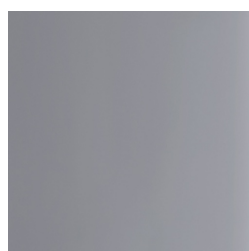
Frigerio



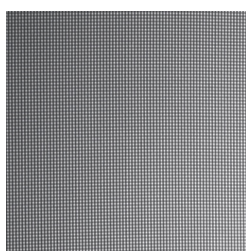
LIGHT HARMONY | 20

As for the style, also the colour is a representation of a trip in space and time. The light tones are ideal to create wider and brighter environments, for a timeless style. The harmony of the elements creates an atmosphere highly refined and expresses lightness also in the contrast with different materials. Fabric, leather, hide, wood and marble, all in their different shades and intensity of colours play in a game of a mutual switch off and on, by enhancing and matching to each other with sensational material's contrasts. The different chromatic combinations highlight the personal taste reflected into a contemporary time, always more and more eclectic, contaminated and in the search of a bespoke elegance. The moodboard Light Harmony provides solution in natural shades from beige to turtle colour or proposes solutions with a touch of green, which recalls the energy of the nature for a relaxing and vital environment. Chromatic tonalities which match traditional solutions such as neutral colours like white and grey and the many shades of wood.

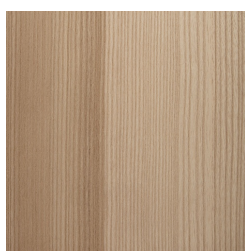
MATERIALI



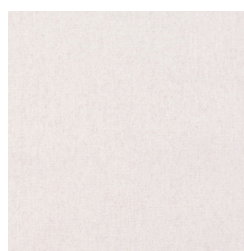
VETRO
FUM&EGRAVE;



VETRO TEXTURE
FUM&EGRAVE;



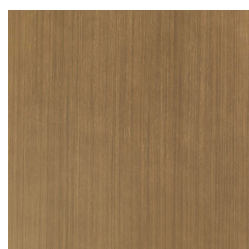
FRASSINO COLOR
SABBIA



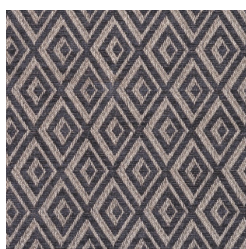
NEBRASKA 30 -
LUSO



NEBRASKA 08 -
LUSO



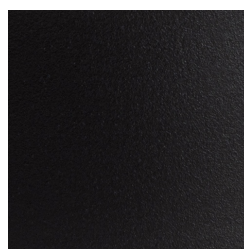
PATINATO COLOR
OTTONE



LA BOHEME 05 -
LUSO



NUBUK - 3414-B -
PLUS



COLOR NERO
SABL&EGRAVE;



ANALOG



COOPER



KENT



LIZA



LIZZYE SEDIA



SANTAMONICA



UNIQUE
COLLECTION |
R10-R11

DISCOVER OTHER MOODS



LIGHT HARMONY



LIGHT HARMONY | 1



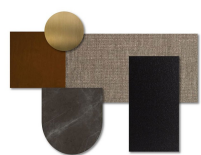
LIGHT HARMONY | 2



LIGHT HARMONY | 3



LIGHT HARMONY | 4



LIGHT HARMONY | 5



INSIDE GREENS



EX INSIDE GREENS | 1



INSIDE GREENS | 2



LIGHT HARMONY | 9



LIGHT HARMONY | 10



LIGHT HARMONY | 11



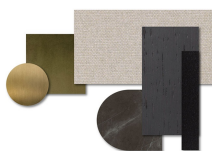
LIGHT HARMONY | 12



LIGHT HARMONY | 13



LIGHT HARMONY | 14



LIGHT HARMONY | 15



LIGHT HARMONY | 16



LIGHT HARMONY | 17



LIGHT HARMONY | 18



LIGHT HARMONY | 19



LIGHT HARMONY | 21



THIN DARK LINES



THIN DARK LINES | 9



THIN DARK LINES | 2



THIN DARK LINES | 3



THIN DARK LINES | 4



THIN DARK LINES | 5



THIN DARK LINES | 6



THIN DARK LINES | 7



THIN DARK LINES | 8



THIN DARK LINES | 9



THIN DARK LINES | 10



THIN DARK LINES | 11



TERRA MATER



TERRA MATER | 1



TERRA MATER | 2



TERRA MATER | 3



TERRA MATER | 4



TERRA MATER | 5



TERRA MATER | 6



TERRA MATER | 7



TERRA MATER | 8



TERRA MATER | 9



TERRA MATER | 10



TERRA MATER | 11



TOUCH OF BLUES



TERRA MATER | 12



TOUCH OF BLUES | 1



TOUCH OF BLUES | 2



TERRA MATER | 13



TERRA MATER | 14



TOUCH OF BLUES | 3



TOUCH OF BLUES | 4



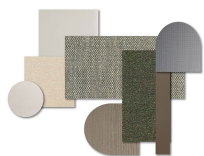
TERRA MATER | 15



TERRA MATER | 16



THIN DARK LINES



TOUCH OF BLUES |
6



TERRA MATER | 17



TERRA MATER | 18



TOUCH OF BLUES |
7



TERRA MATER | 19



TERRA MATER | 20



TOUCH OF BLUES |
8



TERRA MATER | 21



TOUCH OF BLUES |
9



TERRA MATER | 22



TOUCH OF BLUES |
10



TERRA MATER | 23



TERRA MATER | 24